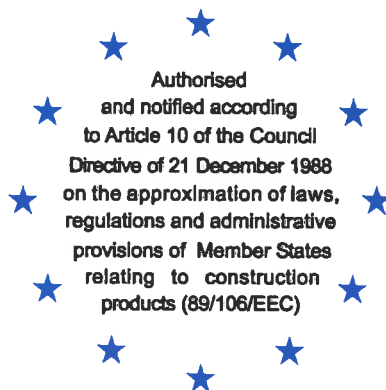


Deutsches Institut für Bautechnik

Anstalt des öffentlichen Rechts

Kolonnenstr. 30 L
10829 Berlin
Germany

Tel.: +49(0)30 787 30 0
Fax: +49(0)30 787 30 320
E-mail: dibt@dibt.de
Internet: www.dibt.de



DIBt

Mitglied der EOTA
Member of EOTA

European Technical Approval ETA-05/0069

English translation prepared by DIBt - Original version in German language

Handelsbezeichnung
Trade name

fischer Ankerbolzen FAZ II
fischer Anchor Bolt FAZ II

Zulassungsinhaber
Holder of approval

fischerwerke GmbH & Co. KG
Weinhalde 14-18
72178 Waldachtal
DEUTSCHLAND

Zulassungsgegenstand
und Verwendungszweck
*Generic type and use
of construction product*

Kraftkontrolliert spreizender Dübel in den Größen M8, M10,
M12, M16, M20 und M24 zur Verankerung im Beton
*Torque controlled expansion anchor of sizes M8, M10, M12, M16, M20 and
M24 for use in concrete*

Geltungsdauer: vom
Validity: from
bis
to

9 December 2008
9 December 2013

Herstellwerk
Manufacturing plant

fischerwerke

Diese Zulassung umfasst
This Approval contains

16 Seiten einschließlich 8 Anhänge
16 pages including 8 annexes

Diese Zulassung ersetzt
This Approval replaces

ETA-05/0069 mit Geltungsdauer vom 22.06.2007 bis 15.04.2010
ETA-05/0069 with validity from 22.06.2007 to 15.04.2010



Europäische Organisation für Technische Zulassungen
European Organisation for Technical Approvals

I LEGAL BASES AND GENERAL CONDITIONS

- 1 This European technical approval is issued by Deutsches Institut für Bautechnik in accordance with:
 - Council Directive 89/106/EEC of 21 December 1988 on the approximation of laws, regulations and administrative provisions of Member States relating to construction products¹, modified by Council Directive 93/68/EEC² and Regulation (EC) N° 1882/2003 of the European Parliament and of the Council³;
 - Gesetz über das In-Verkehr-Bringen von und den freien Warenverkehr mit Bauprodukten zur Umsetzung der Richtlinie 89/106/EWG des Rates vom 21. Dezember 1988 zur Angleichung der Rechts- und Verwaltungsvorschriften der Mitgliedstaaten über Bauprodukte und anderer Rechtsakte der Europäischen Gemeinschaften (Bauproduktengesetz - BauPG) vom 28. April 1998⁴, zuletzt geändert durch Gesetz vom 06.01.2004⁵;
 - Common Procedural Rules for Requesting, Preparing and the Granting of European technical approvals set out in the Annex to Commission Decision 94/23/EC⁶;
 - Guideline for European technical approval of "Metal anchors for use in concrete - Part 2: Torque controlled expansion anchors ", ETAG 001-02.
- 2 Deutsches Institut für Bautechnik is authorized to check whether the provisions of this European technical approval are met. Checking may take place in the manufacturing plant. Nevertheless, the responsibility for the conformity of the products to the European technical approval and for their fitness for the intended use remains with the holder of the European technical approval.
- 3 This European technical approval is not to be transferred to manufacturers or agents of manufacturers other than those indicated on page 1, or manufacturing plants other than those indicated on page 1 of this European technical approval.
- 4 This European technical approval may be withdrawn by Deutsches Institut für Bautechnik, in particular pursuant to information by the Commission according to Article 5(1) of Council Directive 89/106/EEC.
- 5 Reproduction of this European technical approval including transmission by electronic means shall be in full. However, partial reproduction can be made with the written consent of Deutsches Institut für Bautechnik. In this case partial reproduction has to be designated as such. Texts and drawings of advertising brochures shall not contradict or misuse the European technical approval.
- 6 The European technical approval is issued by the approval body in its official language. This version corresponds fully to the version circulated within EOTA. Translations into other languages have to be designated as such.

1 Official Journal of the European Communities L 40, 11.02.1989, p. 12

2 Official Journal of the European Communities L 220, 30.08.1993, p. 1

3 Official Journal of the European Union L 284, 31.10.2003, p. 25

4 Bundesgesetzblatt I, p. 812

5 Bundesgesetzblatt I, p.2, 15

6 Official Journal of the European Communities L 17, 20.01.1994, p. 34

II SPECIFIC CONDITIONS OF THE EUROPEAN TECHNICAL APPROVAL

1 Definition of the construction product and intended use

1.1 Definition of the product

The fischer Anchor Bolt FAZ II in the range of M8, M10, M12, M16, M20 and M24 is an anchor made of galvanised steel, stainless steel (marking "A4") or high corrosion steel (marking "C") which is placed into a drilled hole and anchored by torque-controlled expansion.

An illustration of the product and intended use is given in Annex 1.

1.2 Intended use

The anchor is intended to be used for anchorages for which requirements for mechanical resistance and stability and safety in use in the sense of the Essential Requirements 1 and 4 of Council Directive 89/106 EEC shall be fulfilled and failure of anchorages made with these products would cause risk to human life and/or lead to considerable economic consequences.

The anchor may be used for anchorages with requirements related to resistance to fire.

The anchor is to be used only for anchorages subject to static or quasi-static loading in reinforced or unreinforced normal weight concrete of strength classes C20/25 at minimum and C50/60 at most according to EN 206:2000-12.

The anchor may be used in cracked and non-cracked concrete.

fischer Anchor Bolt FAZ II made of galvanised steel:

The anchor may only be used in structures subject to dry internal conditions.

fischer Anchor Bolt FAZ II A4 made of stainless steel:

The anchor made of stainless steel A4 may be used in structures subject to dry internal conditions and also in structures subject to external atmospheric exposure (including industrial and marine environment), or exposure in permanently damp internal conditions, if no particular aggressive conditions exist. Such particular aggressive conditions are e.g. permanent, alternating immersion in seawater or the splash zone of seawater, chloride atmosphere of indoor swimming pools or atmosphere with extreme chemical pollution (e.g. in desulphurization plants or road tunnels where de-icing materials are used).

fischer Anchor Bolt FAZ II C made of high corrosion resistant steel:

The anchor made of high corrosion resistant steel may be used in structures subject to dry internal conditions and also in structures subject to external atmospheric exposure, in permanently damp internal conditions or in other particular aggressive conditions. Such particular aggressive conditions are e.g. permanent, alternating immersion in seawater or the splash zone of seawater, chloride atmosphere of indoor swimming pools or atmosphere with chemical pollution (e.g. in desulphurization plants or road tunnels where de-icing materials are used).

The provisions made in this European technical approval are based on an assumed working life of the anchor of 50 years. The indications given on the working life cannot be interpreted as a guarantee given by the producer, but are to be regarded only as a means for choosing the right products in relation to the expected economically reasonable working life of the works.

2 Characteristics of the product and methods of verification

2.1 Characteristics of the product

The anchor corresponds to the drawings and provisions given in Annex 2 and 3. The characteristic material values, dimensions and tolerances of the anchor not given in Annex 2 and 3 shall correspond to the respective values laid down in the technical documentation⁷ of this European technical approval.

Regarding the requirements concerning safety in case of fire it is assumed that the anchor meets the requirements of class A1 in relation to reaction to fire in accordance with the stipulations of the Commission decision 96/603/EC, amended by 2000/605/EC.

The characteristic values for the design of anchorages are given in Annexes 5 and 6.

The characteristic values for the design of anchorages regarding resistance to fire are given in Annexes 7 and 8. They are valid for use in a system that is required to provide a specific fire resistance class.

Each anchor is marked with the identifying mark of the producer, the anchor type, the thread size and the maximum thickness of fixture according to Annex 2. Each anchor made of stainless steel A4 is marked with the letter "A4" and each anchor made of high corrosion resistant steel is marked with the letters "C".

The anchor shall only be packaged and supplied as a complete unit.

2.2 Methods of verification

The assessment of fitness of the anchor for the intended use in relation to the requirements for mechanical resistance and stability and safety in use in the sense of the Essential Requirements 1 and 4 has been made in accordance with the "Guideline for European technical approval of Metal Anchors for Use in Concrete" ETAG 001, Part 1 "Anchors in general" and Part 2 "Torque-controlled expansion anchors", on the basis of Option 1.

The assessment of the anchor for the intended use in relation to the requirements for resistance to fire has been made in accordance with the Technical Report TR 020 "Evaluation of anchorages in concrete concerning resistance to fire".

In addition to the specific clauses relating to dangerous substances contained in this European technical approval, there may be other requirements applicable to the products falling within its scope (e.g. transposed European legislation and national laws, regulations and administrative provisions). In order to meet the provisions of the Construction Products Directive, these requirements need also to be complied with, when and where they apply.

⁷ The technical documentation of this European technical approval is deposited at the Deutsches Institut für Bautechnik and, as far as relevant for the tasks of the approved bodies involved in the attestation of conformity procedure, is handed over to the approved bodies.

3 Evaluation and attestation of conformity and CE marking

3.1 System of attestation of conformity

According to the decision 96/582/EG of the European Commission⁸ the system 2(i) (referred to as system 1) of attestation of conformity applies.

This system of attestation of conformity is defined as follows:

System 1: Certification of the conformity of the product by an approved certification body on the basis of:

- (a) Tasks for the manufacturer:
 - (1) factory production control;
 - (2) further testing of samples taken at the factory by the manufacturer in accordance with a prescribed test plan;
- (b) Tasks for the approved body:
 - (3) initial type-testing of the product;
 - (4) initial inspection of factory and of factory production control;
 - (5) continuous surveillance, assessment and approval of factory production control.

Note: Approved bodies are also referred to as "notified bodies".

3.2 Responsibilities

3.2.1 Tasks for the manufacturer

3.2.1.1 Factory production control

The manufacturer shall exercise permanent internal control of production. All the elements, requirements and provisions adopted by the manufacturer shall be documented in a systematic manner in the form of written policies and procedures, including records of results performed. This production control system shall insure that the product is in conformity with this European technical approval.

The manufacturer may only use initial/raw/constituent materials stated in the technical documentation of this European technical approval.

The factory production control shall be in accordance with the control plan of November 2008 which is part of the technical documentation of this European technical approval. The control plan is laid down in the context of the factory production control system operated by the manufacturer and deposited with Deutsches Institut für Bautechnik.⁹

The results of factory production control shall be recorded and evaluated in accordance with the provisions of the control plan.

3.2.1.2 Other tasks for the manufacturer

The manufacturer shall, on the basis of a contract, involve a body which is approved for the tasks referred to in section 3.1 in the field of anchors in order to undertake the actions laid down in section 3.2.2 For this purpose, the control plan referred to in sections 3.2.1.1 and 3.2.2 shall be handed over by the manufacturer to the approved body involved.

The manufacturer shall make a declaration of conformity, stating that the construction product is in conformity with the provisions of this European technical approval.

⁸ Official Journal of the European Communities L 254 of 08.10.1996.

⁹ The control plan is a confidential part of the European technical approval and only handed over to the approved body involved in the procedure of attestation of conformity. See section 3.2.2.

3.2.2 Tasks for the approved bodies

The approved body shall perform the

- initial type-testing of the product,
 - initial inspection of factory and of factory production control,
 - continuous surveillance, assessment and approval of factory production control,
- in accordance with the provisions laid down in the control plan.

The approved body shall retain the essential points of its actions referred to above and state the results obtained and conclusions drawn in a written report.

The approved certification body involved by the manufacturer shall issue an EC certificate of conformity of the product stating the conformity with the provisions of this European technical approval.

In cases where the provisions of the European technical approval and its control plan are no longer fulfilled the certification body shall withdraw the certificate of conformity and inform Deutsches Institut für Bautechnik without delay.

3.3 CE marking

The CE marking shall be affixed on each packaging of anchors. The letters "CE" shall be followed by the identification number of the approved certification body, where relevant, and be accompanied by the following additional information:

- the name and address of the producer (legal entity responsible for the manufacturer),
- the last two digits of the year in which the CE marking was affixed,
- the number of the EC certificate of conformity for the product,
- the number of the European technical approval,
- the number of the guideline for European technical approval,
- use category (ETAG 001-1 Option 1),
- size.

4 Assumptions under which the fitness of the product for the intended use was favourably assessed

4.1 Manufacturing

The European technical approval is issued for the product on the basis of agreed data/information, deposited with Deutsches Institut für Bautechnik, which identifies the product that has been assessed and judged. Changes to the product or production process, which could result in this deposited data/information being incorrect, should be notified to Deutsches Institut für Bautechnik before the changes are introduced. Deutsches Institut für Bautechnik will decide whether or not such changes affect the European technical approval and consequently the validity of the CE marking on the basis of the European technical approval and if so whether further assessment or alterations to the European technical approval shall be necessary.

4.2 Installation

4.2.1 Design of anchorages

The fitness of the anchor for the intended use is given under the following conditions:

The anchorages are designed in accordance with the "Guideline for European technical approval of Metal Anchors for Use in Concrete", Annex C, Method A, for torque controlled expansion anchors under the responsibility of an engineer experienced in anchorages and concrete work.

Verifiable calculation notes and drawings are taking account of the loads to be anchored.

The position of the anchor is indicated on the design drawings (e.g. position of the anchor relative to reinforcement or to supports).

The design of anchorages under fire exposure has to consider the conditions given in the Technical Report TR 020 "Evaluation of anchorages in concrete concerning resistance to fire". The relevant characteristic anchor values are given in Annexes 7 and 8. The design method covers anchors with a fire attack from one side only. If the fire attack is from more than one side, the design method may be taken only, if the edge distance of the anchor is $c \geq 300$ mm.

4.2.2 Installation of anchors

The fitness for use of the anchor can only be assumed if the anchor is installed as follows:

- Anchor installation carried out by appropriately qualified personnel and under the supervision of the person responsible for technical matters of the site,
- Use of the anchor only as supplied by the manufacturer without exchanging the components of an anchor,
- Anchor installation in accordance with the manufacturer's specifications and drawings and using the appropriate tools,
- Checks before placing the anchor to ensure that the strength class of the concrete in which the anchor is to be placed is in the range given and is not lower than that of the concrete to which the characteristic loads apply,
- Check of concrete being well compacted, e.g. without significant voids,
- Edge distances and spacings not less than the specified values without minus tolerances,
- Positioning of the drill holes without damaging the reinforcement,
- In case of aborted hole: new drilling at a minimum distance away of twice the depth of the aborted hole or smaller distance if the aborted drill hole is filled with high strength mortar and if under shear or oblique tension load it is not in the direction of load application,
- Cleaning of the hole of drilling dust,
- Anchor installation such that the effective anchorage depth is complied with. This compliance is ensured, if the exist thickness of fixture is not greater than the maximum thickness of fixture marked on the anchor,
- Application of the torque moment given in Annex 4 using a calibrated torque wrench.

4.2.3 Responsibility of the manufacturer

The manufacturer is responsible to ensure that the information on the specific conditions according to 1 and 2 including Annexes referred to and 4.2.1 and 4.2.2 is given to those who are concerned. This information may be made by reproduction of the respective parts of the European technical approval. In addition all installation data shall be shown clearly on the package and/or on an enclosed instruction sheet, preferably using illustration(s).

The minimum data required are:

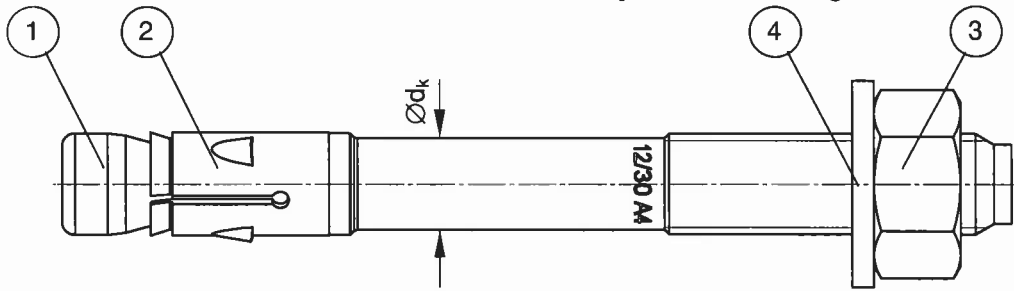
- Diameter of drill bit,
- Thread diameter,
- Maximum thickness of the fixture,
- Minimum effective anchorage depth,
- Minimum hole depth,
- Torque moment,
- Information on the installation procedure, including cleaning of the hole, preferably by means of an illustration,
- Reference to any special installation equipment needed,
- Identification of the manufacturing batch.

All data shall be presented in a clear and explicit form.

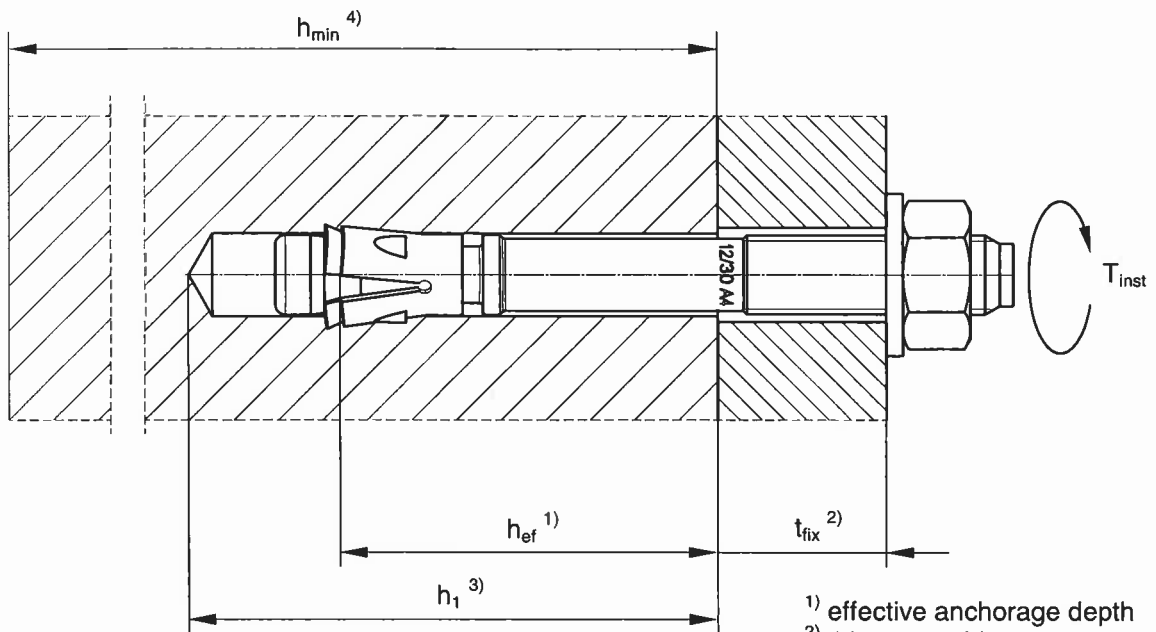
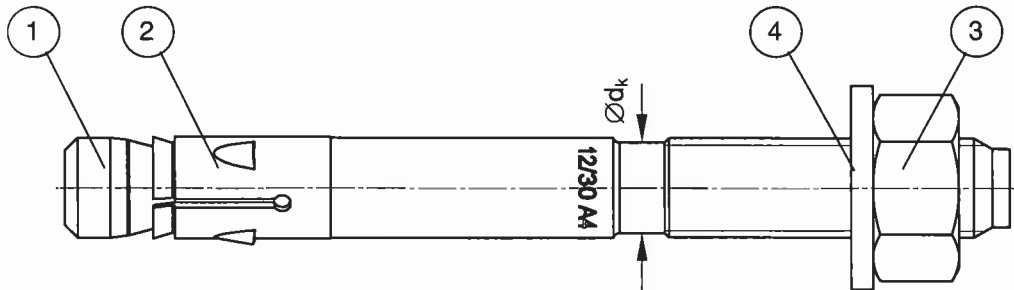
Dipl.-Ing. E. Jasch
President of Deutsches Institut für Bautechnik
Berlin, 9 December 2008

beglaubigt:
Lange

Cone bolt manufactured by cold – forming:



Cone bolt manufactured by metal - cutting::



- 1) effective anchorage depth
- 2) thickness of fixture
- 3) drill hole depth
- 4) min. thickness of concrete member

- ① Cone bolt (cold – formed or metal - cut)
- ② Expansion sleeve
- ③ Hexagon nut
- ④ Washer

Doc: ETA-FAZ II-E

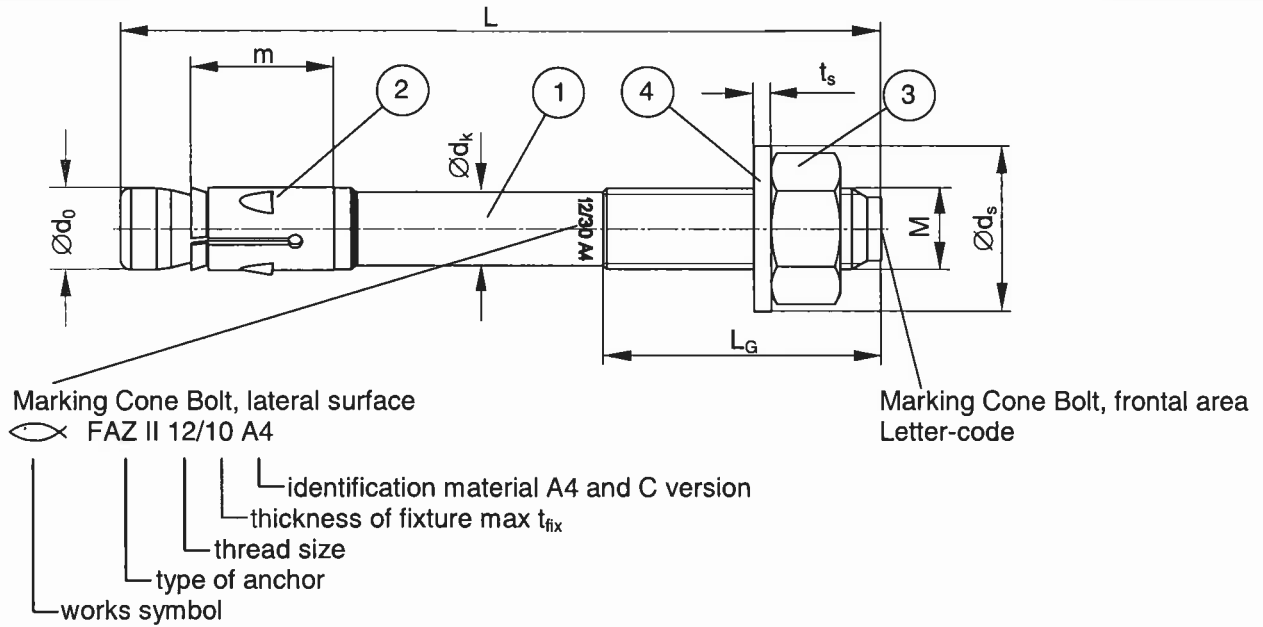
fischer Anchor bolt FAZ II, FAZ II A4, FAZ II C

Product and intended use

Annex 1

of European technical approval

ETA – 05/0069



Letter-code on the frontal area of the cone bolt and maximum thickness of fixture t_{fix} :

| | | | | | | | | | | | | | |
|---------------|--------|-----|-----|-----|-----|-----|-----|-----|-----|-----|-----|-----|----|
| marking | (A) | (B) | (C) | (D) | (E) | (F) | (G) | (H) | (I) | (K) | (L) | (M) | |
| max t_{fix} | M8-M24 | 5 | 10 | 15 | 20 | 25 | 30 | 35 | 40 | 45 | 50 | 60 | 70 |

| | | | | | | | | | | | | | |
|---------------|--------|-----|-----|-----|-----|-----|-----|-----|-----|-----|-----|-----|-----|
| marking | (N) | (O) | (P) | (R) | (S) | (T) | (U) | (V) | (W) | (X) | (Y) | (Z) | |
| max t_{fix} | M8-M24 | 80 | 90 | 100 | 120 | 140 | 160 | 180 | 200 | 250 | 300 | 350 | 400 |

Table 1: Anchor dimensions [mm]

| Part | Designation | Deviation | FAZ II, FAZ II A4, FAZ II C | | | | | |
|------|----------------------|------------------------|-----------------------------|------|------|------|------|------|
| | | | M8 | M10 | M12 | M16 | M20 | M24 |
| 1 | Cone bolt | thread size | M8 | M10 | M12 | M16 | M20 | M24 |
| | | $\varnothing d_0$ | 7.8 | 9.8 | 11.8 | 15.7 | 19.8 | 23.5 |
| | | $\varnothing d_k$ | 7.1 | 8.9 | 10.7 | 14.5 | 19.8 | 23.5 |
| | | $L_G \geq$ | 19 | 26 | 31 | 40 | 50 | 57 |
| 2 | Expansion sleeve | m | 17.8 | 20.0 | 20.6 | 27.5 | 33.4 | 40.2 |
| | | sheet thickness | 1.3 | 1.4 | 1.6 | 2.4 | 2.4 | 3.0 |
| 3 | Hexagon nut | wrench size | 13 | 17 | 19 | 24 | 30 | 36 |
| 4 | Washer | $t_s \geq$ | 1.4 | 1.8 | 2.3 | 2.7 | 2.7 | 3.7 |
| | | $\varnothing d_s \geq$ | 15 | 19 | 23 | 29 | 36 | 43 |
| | Thickness of fixture | $t_{fix} \geq$ | 0 | 0 | 0 | 0 | 0 | 0 |
| | | $t_{fix} \leq$ | 200 | 250 | 300 | 400 | 500 | 600 |
| | Length of anchor | L_{min} | 67 | 85 | 100 | 125 | 140 | 174 |
| | | L_{max} | 267 | 335 | 400 | 525 | 640 | 774 |

The anchor may be produced with different maximum admissible thickness of fixture.

Doc: ETA-FAZ II-E

fischer Anchor bolt FAZ II, FAZ II A4, FAZ II C

Anchor dimensions

Annex 2

of European technical approval

ETA - 05/0069

Table 2a: Materials FAZ II

| Part | Designation | Material | Treatment |
|------|------------------|--|---|
| 1 | Cone bolt | Cold form steel or free cutting steel | Zinc plated $\geq 5 \mu\text{m}$ according to EN ISO 4042, + functional coating |
| 2 | Expansion sleeve | Cold strip, EN 10139 | Zinc plated $\geq 5 \mu\text{m}$ according to EN ISO 4042 |
| 3 | Hexagon nut | Steel, property class 8, EN 20 898 - 2 | Zinc plated $\geq 5 \mu\text{m}$ according to EN ISO 4042, + functional coating ¹⁾ |
| 4 | Washer | Cold strip, EN 10139 | |

¹⁾ Functional coating on hexagon nuts M8 und M10, and on washers for M12, M16 and M24

Table 2b: Materials FAZ II A4

| Part | Designation | Material | Treatment |
|------|------------------|---|--------------------|
| 1 | Cone bolt | stainless steel EN 10 088 | functional coating |
| 2 | Expansion sleeve | stainless steel EN 10 088 | - |
| 3 | Hexagon nut | stainless steel EN 10 088; ISO 3506-2; property class -70 | functional coating |
| 4 | Washer | stainless steel EN 10 088 | - |

Table 2c: Materials FAZ II C

| Part | Designation | Material | Treatment |
|------|------------------|--|--------------------|
| 1 | Cone bolt | high corrosion resistant steel EN 10 088 | functional coating |
| 2 | Expansion sleeve | high corrosion resistant steel EN 10 088 | - |
| 3 | Hexagon nut | high corrosion resistant steel EN 10 088; ISO 3506-2; property class -70 | functional coating |
| 4 | Washer | high corrosion resistant steel EN 10 088 | - |

Table 3: Installation parameters

| Type of anchor / size | | FAZ II, FAZ II A4, FAZ II C | | | | | |
|---|-----------------------------------|-----------------------------|-------|------|------|-------|-------|
| | | M8 | M10 | M12 | M16 | M20 | M24 |
| Nominal drill hole diameter | $d_0 = [\text{mm}]$ | 8 | 10 | 12 | 16 | 20 | 24 |
| Cutting diameter of drill bit | $d_{\text{cut}} \leq [\text{mm}]$ | 8.45 | 10.45 | 12.5 | 16.5 | 20.55 | 24.55 |
| Depth of drill hole in concrete | $h_1 \geq [\text{mm}]$ | 55 | 75 | 90 | 110 | 125 | 155 |
| Diameter of clearance hole in the fixture | $d_f \leq [\text{mm}]$ | 9 | 12 | 14 | 18 | 22 | 26 |
| Required torque moment | $T_{\text{inst}} = [\text{Nm}]$ | 20 | 45 | 60 | 110 | 200 | 270 |

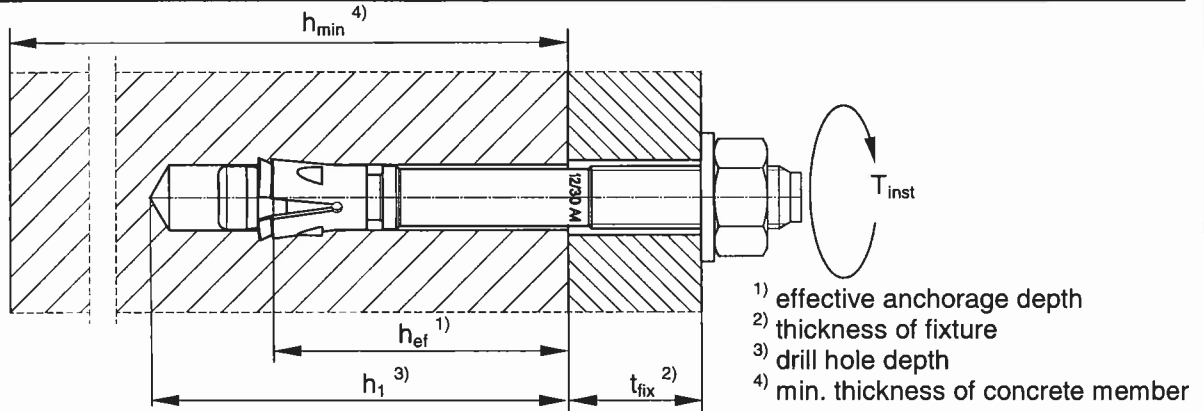


Table 4: Minimum thickness of concrete members, minimum spacing and minimum edge distances of anchors

| Type of anchor / size | | FAZ II, FAZ II A4, FAZ II C | | | | | | |
|---|---|--------------------------------|-----|-----|-----|-----|-----|-----|
| | | M8 | M10 | M12 | M16 | M20 | M24 | |
| Applications with concrete members of thickness $\geq 2 \times h_{\text{ef}}$ | Minimum thickness of concrete member | $h_{\text{min},1} [\text{mm}]$ | 100 | 120 | 140 | 170 | 200 | 250 |
| | Non - cracked concrete | | | | | | | |
| | Minimum spacing | $s_{\text{min}} [\text{mm}]$ | 40 | 40 | 50 | 60 | 95 | 100 |
| | | for $c \geq [\text{mm}]$ | 50 | 60 | 70 | 95 | 180 | 200 |
| | Minimum edge distance | $c_{\text{min}} [\text{mm}]$ | 40 | 45 | 55 | 65 | 95 | 135 |
| | | for $s \geq [\text{mm}]$ | 100 | 80 | 110 | 150 | 190 | 235 |
| | Cracked concrete | | | | | | | |
| | Minimum spacing | $s_{\text{min}} [\text{mm}]$ | 35 | 40 | 45 | 60 | 95 | 100 |
| for $c \geq [\text{mm}]$ | | 50 | 55 | 70 | 95 | 140 | 170 | |
| Minimum edge distance | $c_{\text{min}} [\text{mm}]$ | 40 | 45 | 55 | 65 | 85 | 100 | |
| | for $s \geq [\text{mm}]$ | 70 | 80 | 110 | 150 | 190 | 220 | |
| Applications with concrete members of thickness $< 2 \times h_{\text{ef}}$ | Minimum thickness of concrete member | $h_{\text{min},2} [\text{mm}]$ | 80 | 100 | 120 | 140 | 160 | 200 |
| | Cracked and non- cracked concrete | | | | | | | |
| | Minimum spacing | $s_{\text{min}} [\text{mm}]$ | 35 | 40 | 50 | 80 | 125 | 150 |
| | | for $c \geq [\text{mm}]$ | 70 | 100 | 90 | 130 | 220 | 230 |
| | Minimum edge distance | $c_{\text{min}} [\text{mm}]$ | 40 | 60 | 60 | 65 | 125 | 135 |
| for $s \geq [\text{mm}]$ | | 100 | 90 | 120 | 180 | 230 | 235 | |

Intermediate values for s_{min} and c_{min} inside of the same thickness of concrete member by linear interpolation.

Doc: ETA-FAZ II-E

fischer Anchor bolt FAZ II, FAZ II A4, FAZ II C

Parameters of installation

Annex 4

of European technical approval

ETA - 05/0069

Table 5: Design method A - characteristic values for tension loads

| Type of anchor / size | | | FAZ II, FAZ II A4, FAZ II C | | | | | |
|--|---------------|---------------|-----------------------------|------|------|-----------------|-----------------|-----------------|
| | | | M8 | M10 | M12 | M16 | M20 | M24 |
| Steel failure | | | | | | | | |
| Characteristic resistance | $N_{Rk,s}$ | [kN] | 16.0 | 27.0 | 41.5 | 66.0 | 111.0 | 150.0 |
| Partial safety factor | γ_{Ms} | ¹⁾ | 1.5 | | | | | |
| Pullout failure | | | | | | | | |
| Characteristic resistance in cracked concrete | $N_{Rk,p}$ | [kN] C20/25 | 5 | 9 | 16 | - ²⁾ | - ²⁾ | - ²⁾ |
| Characteristic resistance in non - cracked concrete | $N_{Rk,p}$ | [kN] C20/25 | 9 | 16 | 25 | - ²⁾ | - ²⁾ | - ²⁾ |
| Increasing factors for $N_{Rk,p}$ for cracked and non - cracked concrete | ψ_c | C25/30 | 1.10 | | | | | |
| | | C30/37 | 1.22 | | | | | |
| | | C35/45 | 1.34 | | | | | |
| | | C40/50 | 1.41 | | | | | |
| | | C45/55 | 1.48 | | | | | |
| | | C50/60 | 1.55 | | | | | |
| Partial safety factor | γ_{Mp} | ¹⁾ | 1.5 ³⁾ | | | | | |
| Concrete cone and splitting failure for applications with concrete members of thickness $\geq 2x h_{ef}$ | | | | | | | | |
| Effective anchorage depth | h_{ef} | [mm] | 45 | 60 | 70 | 85 | 100 | 125 |
| Min. thickness of concrete member | $h_{min,1}$ | [mm] | 100 | 120 | 140 | 170 | 200 | 250 |
| Spacing | $s_{cr,N}$ | [mm] | 140 | 180 | 210 | 260 | 300 | 380 |
| Edge distance | $c_{cr,N}$ | [mm] | 70 | 90 | 105 | 130 | 150 | 190 |
| Spacing (splitting failure) ⁴⁾ | $s_{cr,sp}$ | [mm] | 140 | 180 | 210 | 260 | 370 | 430 |
| Edge distance (splitting failure) ⁴⁾ | $c_{cr,sp}$ | [mm] | 70 | 90 | 105 | 130 | 185 | 215 |
| Partial safety factor | γ_{Mc} | ¹⁾ | 1.5 ³⁾ | | | | | |
| Concrete cone and splitting failure for applications with concrete members of thickness $< 2x h_{ef}$ | | | | | | | | |
| Effective anchorage depth | h_{ef} | [mm] | 45 | 60 | 70 | 85 | 100 | 125 |
| Min. thickness of concrete member | $h_{min,2}$ | [mm] | 80 | 100 | 120 | 140 | 160 | 200 |
| Spacing | $s_{cr,N}$ | [mm] | 140 | 180 | 210 | 260 | 300 | 380 |
| Edge distance | $c_{cr,N}$ | [mm] | 70 | 90 | 105 | 130 | 150 | 190 |
| Spacing (splitting failure) ⁴⁾ | $s_{cr,sp}$ | [mm] | 180 | 240 | 280 | 340 | 480 | 550 |
| Edge distance (splitting failure) ⁴⁾ | $c_{cr,sp}$ | [mm] | 90 | 120 | 140 | 170 | 240 | 275 |
| Partial safety factor | γ_{Mc} | ¹⁾ | 1.5 ³⁾ | | | | | |

¹⁾ In absence of other national regulations.

²⁾ Pullout failure not relevant.

³⁾ The partial safety factor $\gamma_2 = 1.0$ is included.

⁴⁾ Intermediate values for $s_{cr,sp}$ and $c_{cr,sp}$ between concrete thickness $h_{min,2}$ and $h_{min,1}$ by linear interpolation.

Table 6: Displacements due to tension loads

| Type of anchor / size | | | FAZ II, FAZ II A4, FAZ II C | | | | | |
|--|--------------------|------|-----------------------------|-----|------|------|------|------|
| | | | M8 | M10 | M12 | M16 | M20 | M24 |
| Tension load in cracked concrete | N | [kN] | 2.3 | 4.2 | 7.5 | 13.2 | 16.4 | 22.9 |
| Displacement | δ_{N0} | [mm] | 0.5 | 0.5 | 0.7 | 1.0 | 1.2 | 1.2 |
| | $\delta_{N\infty}$ | [mm] | 1.2 | | | | 1.4 | 1.5 |
| Tension load in non - cracked concrete | N | [kN] | 4.2 | 7.5 | 11.7 | 18.7 | 23.3 | 32.5 |
| Displacement | δ_{N0} | [mm] | 0.3 | 0.3 | 0.5 | 0.7 | 1.2 | 1.2 |
| | $\delta_{N\infty}$ | [mm] | 1.2 | | | | 1.4 | 1.5 |

Doc: ETA-FAZ II-E

fischer Anchor FAZ II, FAZ II A4, FAZ II C

Design method A,
characteristic values for tension loads, displacements

Annex 5

of European
technical approval

ETA - 05/0069

Table 7: Design method A - characteristic values for shear loads

| Type of anchor / size | | | FAZ II, FAZ II A4, FAZ II C | | | | | |
|---|---------------|---------------|-----------------------------|------|------|------|-----|-----|
| | | | M8 | M10 | M12 | M16 | M20 | M24 |
| Steel failure without lever arm | | | | | | | | |
| Characteristic resistance | $V_{Rk,s}$ | [kN] | 12.0 | 20.0 | 29.5 | 55.0 | 70 | 86 |
| Partial safety factor | γ_{Ms} | ¹⁾ | 1.25 | | | | | |
| Steel failure with lever arm | | | | | | | | |
| Characteristic bending resistance | $M_{Rk,s}^0$ | [Nm] | 26 | 58 | 92 | 233 | 487 | 769 |
| Partial safety factor | γ_{Ms} | ¹⁾ | 1.25 | | | | | |
| Concrete pryout failure | | | | | | | | |
| Factor in equation (5.6) of ETAG Annex C, 5.2.3.3 | k | | 2.0 | 2.2 | 2.4 | 2.8 | 2.8 | 2.8 |
| Partial safety factor | γ_{Mc} | ¹⁾ | 1.5 ²⁾ | | | | | |
| Concrete edge failure | | | | | | | | |
| Effective length of anchor in shear loading | l_f | [mm] | 45 | 60 | 70 | 85 | 100 | 125 |
| Effective diameter of anchor | d_{nom} | [mm] | 8 | 10 | 12 | 16 | 20 | 24 |
| Partial safety factor | γ_{Mc} | ¹⁾ | 1.5 ²⁾ | | | | | |

¹⁾ In absence of other national regulations.

²⁾ The partial safety factor $\gamma_2 = 1.0$ is included.

Table 8: Displacements due to shear loads

| Type of anchor / size | | | FAZ II, FAZ II A4, FAZ II C | | | | | |
|--|--------------------|------|-----------------------------|------|------|------|------|------|
| | | | M8 | M10 | M12 | M16 | M20 | M24 |
| Shear load in cracked and non-cracked concrete | V | [kN] | 6.9 | 11.4 | 16.9 | 31.4 | 39.4 | 48.5 |
| Displacement | δ_{V0} | [mm] | 2.4 | 4.2 | 4.5 | 3.0 | 3.6 | 3.6 |
| | $\delta_{V\infty}$ | [mm] | 3.6 | 6.3 | 6.8 | 4.5 | 5.4 | 5.4 |

Table 9: Characteristic values to tension loads under fire exposure in cracked and non-cracked concrete C20/25 to C50/60

| Type of anchor/size | FAZ II, FAZ II A4, FAZ II C | | | | | | | | | | | | | | | | | | | | | | | |
|--|-----------------------------|-----|-----|-----|-----|-----|-----------------|-----------------|-----------------|-----------------|-----------------|-----------------|-----------------|-----------------|-----------------|-----------------|-----------------|-----------------|-----------------|-----------------|-----------------|-----------------|-----------------|-----------------|
| | M8 | | | M10 | | | M12 | | | M16 | | | M20 | | | M24 | | | | | | | | |
| Fire resistance R... [min] | 30 | 60 | 90 | 120 | 30 | 60 | 90 | 120 | 30 | 60 | 90 | 120 | 30 | 60 | 90 | 120 | 30 | 60 | 90 | 120 | | | | |
| Steel failure: | | | | | | | | | | | | | | | | | | | | | | | | |
| Characteristic resistance $N_{Rk,s,fi}$ [kN] | 1.4 | 1.2 | 0.9 | 0.8 | 2.8 | 2.3 | 1.9 | 1.6 | 5.0 | 4.1 | 3.2 | 2.8 | 9.4 | 7.7 | 6.0 | 5.2 | 14 | 12 | 9 | 8 | 21 | 17 | 13 | 11 |
| Pullout failure: | | | | | | | | | | | | | | | | | | | | | | | | |
| Characteristic resistance in concrete $N_{Rk,p,fi}$ [kN] | 1.3 | 1.0 | 1.8 | 2.3 | 4.0 | 3.2 | - ¹⁾ | - ¹⁾ | - ¹⁾ | - ¹⁾ | - ¹⁾ | - ¹⁾ | - ¹⁾ | - ¹⁾ | - ¹⁾ | - ¹⁾ | - ¹⁾ | - ¹⁾ | - ¹⁾ | - ¹⁾ | - ¹⁾ | - ¹⁾ | - ¹⁾ | - ¹⁾ |
| Concrete cone failure: | | | | | | | | | | | | | | | | | | | | | | | | |
| Characteristic resistance in concrete $N_{Rk,c,fi}$ [kN] | 2,4 | 1.9 | 4.0 | 5.0 | 7.3 | 5.9 | 12.0 | 9.6 | 18 | 14 | 31 | 25 | 95 | 100 | | | | | | | | | | |
| Spacing $S_{cr,N}$ | 4 x h_{ef} | | | | | | | | | | | | | | | | | | | | | | | |
| S_{min} [mm] | 35 | 40 | 45 | 60 | 95 | 100 | | | | | | | | | | | | | | | | | | |
| Edge Distance C_{min} [mm] | 2 x h_{ef} | | | | | | | | | | | | | | | | | | | | | | | |

$C_{min} = 2 \times h_{ef}$
If fire attack is from more than one side, the edge distance of the anchor has to be bigger than 300 mm.

In absence of other national regulations the partial safety factor for resistance under fire exposure $\gamma_{M,fi} = 1.0$ is recommended.

¹⁾ Pullout failure is not decisive

Table 10: Characteristic values to shear loads under fire exposure in cracked and non-cracked concrete C20/25 to C50/60

| Type of anchor/size | FAZ II, FAZ II A4, FAZ II C | | | | | | | | | | | | | | | | | | | | | | | |
|--|-----------------------------|-----|-----|-----|-----|-----|-----|-----|-----|-----|-----|-----|------|------|------|------|----|----|----|----|----|----|----|----|
| | M8 | | M10 | | M12 | | M16 | | M20 | | M24 | | | | | | | | | | | | | |
| Fire resistance duration | 30 | 60 | 90 | 120 | 30 | 60 | 90 | 120 | 30 | 60 | 90 | 120 | 30 | 60 | 90 | 120 | | | | | | | | |
| Steel failure without lever arm: | | | | | | | | | | | | | | | | | | | | | | | | |
| Characteristic resistance $V_{Rk,s,fi}$ [kN] | 1.8 | 1.6 | 1.3 | 1.2 | 3.6 | 2.9 | 2.2 | 1.9 | 6.3 | 4.9 | 3.5 | 2.8 | 11.7 | 9.1 | 6.6 | 5.3 | 18 | 14 | 10 | 8 | 26 | 20 | 14 | 11 |
| Steel failure with lever arm: | | | | | | | | | | | | | | | | | | | | | | | | |
| Characteristic resistance $M^0_{Rk,s,fi}$ [Nm] | 1.4 | 1.2 | 1.0 | 0.8 | 3.6 | 3.0 | 2.4 | 2.1 | 7.8 | 6.4 | 5.0 | 4.3 | 19.9 | 16.3 | 12.7 | 10.9 | 39 | 32 | 24 | 21 | 67 | 55 | 42 | 37 |
| Concrete pryout failure: | | | | | | | | | | | | | | | | | | | | | | | | |

In Equation (5.6) of ETAG 001, Annex C, 5.2.2.3 the k-factor of Table 7 and the relevant values of $N^0_{Rk,c,fi}$ of Table 9 have to be considered.

Concrete edge failure:

The initial value $V^0_{Rk,c,fi}$ of the characteristic resistance in concrete C20/25 to C50/60 under fire exposure may be determined by:

$$V^0_{Rk,c,fi} = 0.25 \times V^0_{Rk,c} \quad (R30, R 60, R90) \qquad V^0_{Rk,c,fi} = 0.20 \times V^0_{Rk,c} \quad (R120)$$

with $V^0_{Rk,c}$ initial value of the characteristic resistance in cracked concrete C20/25 under normal temperature.

In absence of other national regulations the partial safety factor for resistance under fire exposure $\gamma_{M,fi} = 1.0$ is recommended.